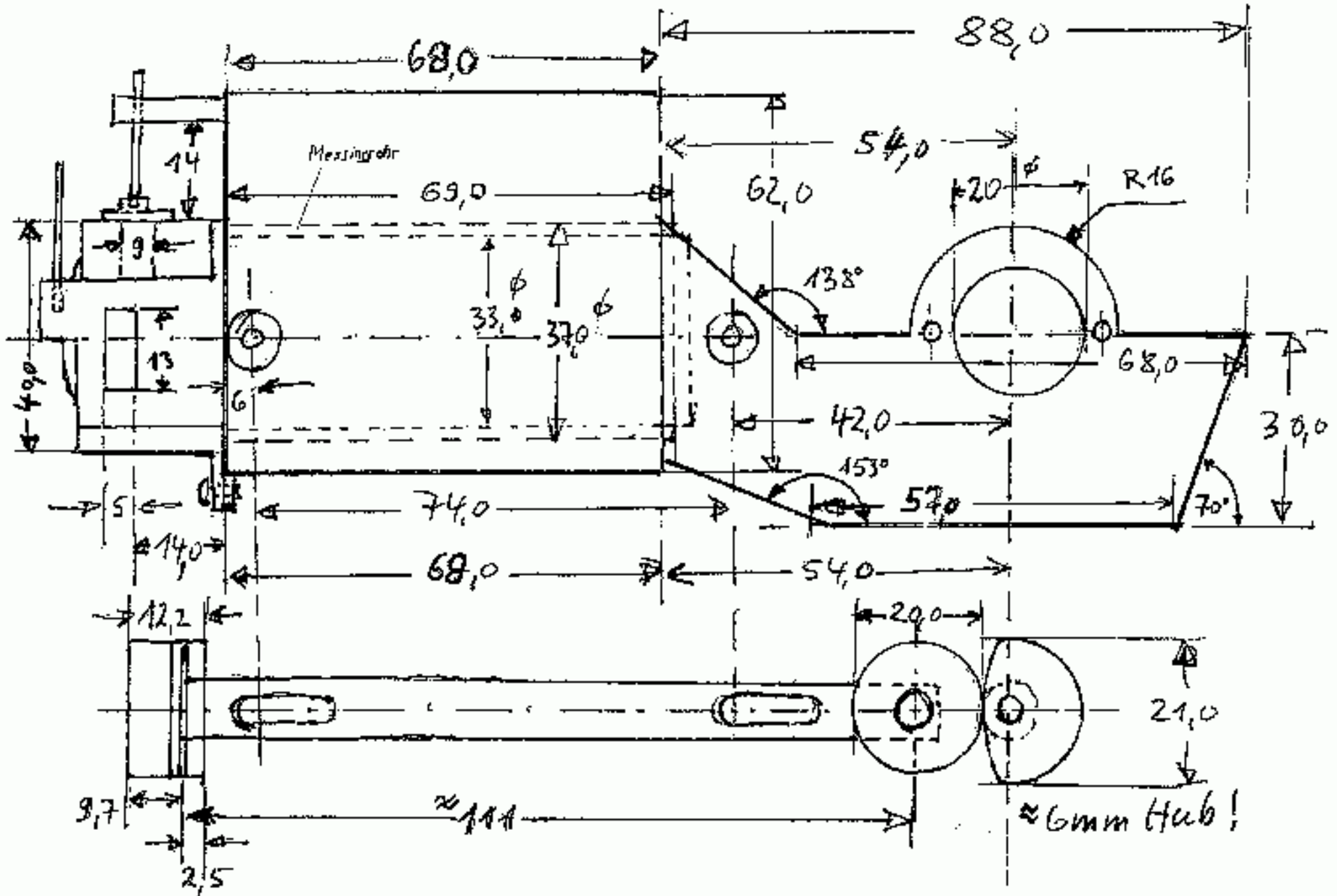


# Rebi-Heißluftmotor (Flammenfresser)

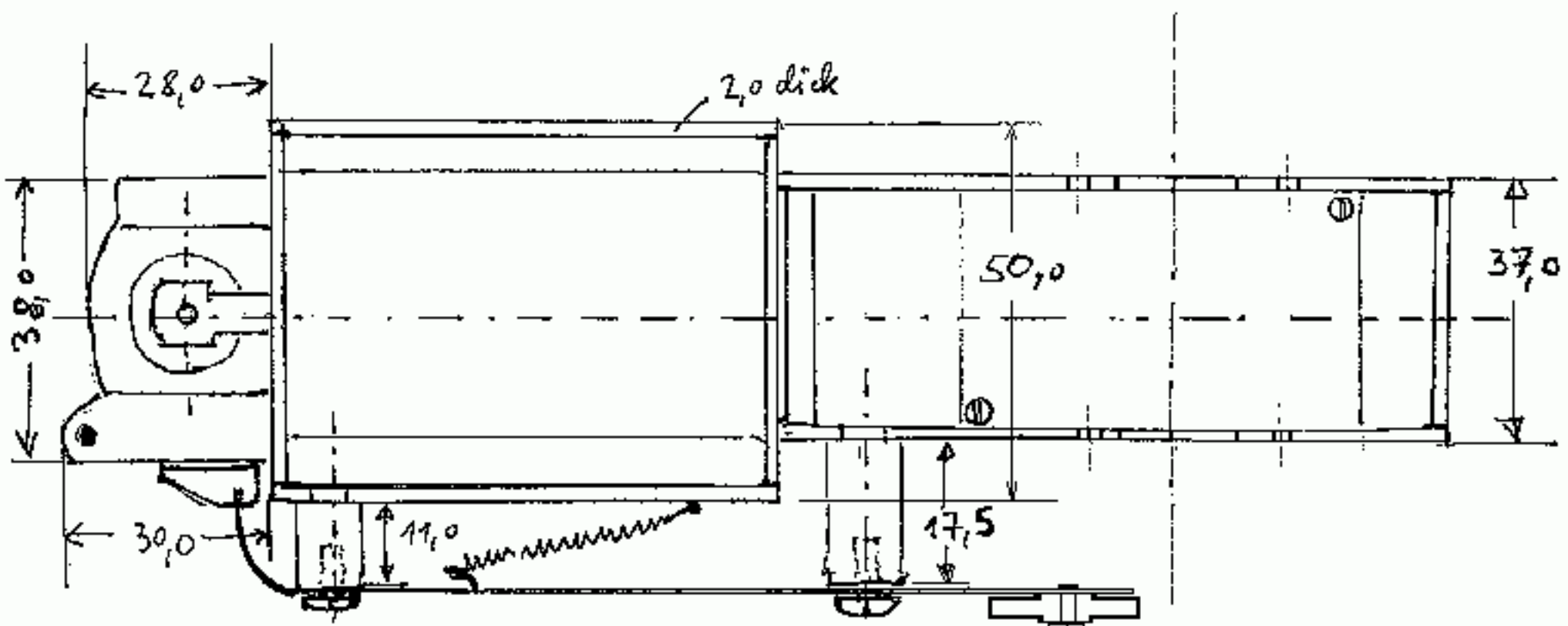


Type: R2-1950  
 U/min: 200-1000  
 Leistung: 1/50 PS

Dochtmitte:  
 10-12 mm vom Einlass entfernt  
 0 mm Vorderkante Einlass  
 Docht:  
 6 mm Dm und 6 mm hoch  
 Dochtoberkante bündig mit Einlasskante unten

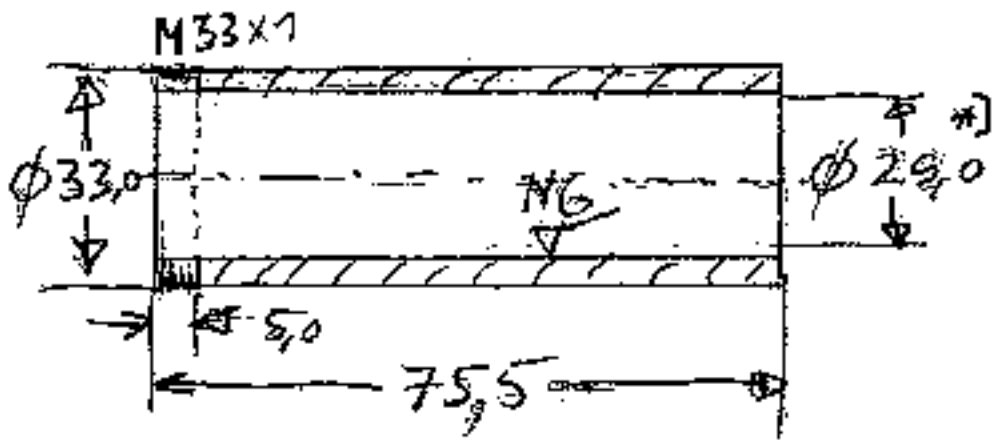


Einlassventilschieber bei ca. 111 so biegen, dass das Einlassventil bei OT die Einlassöffnung gut verschließt (ca. 1mm überstehend).



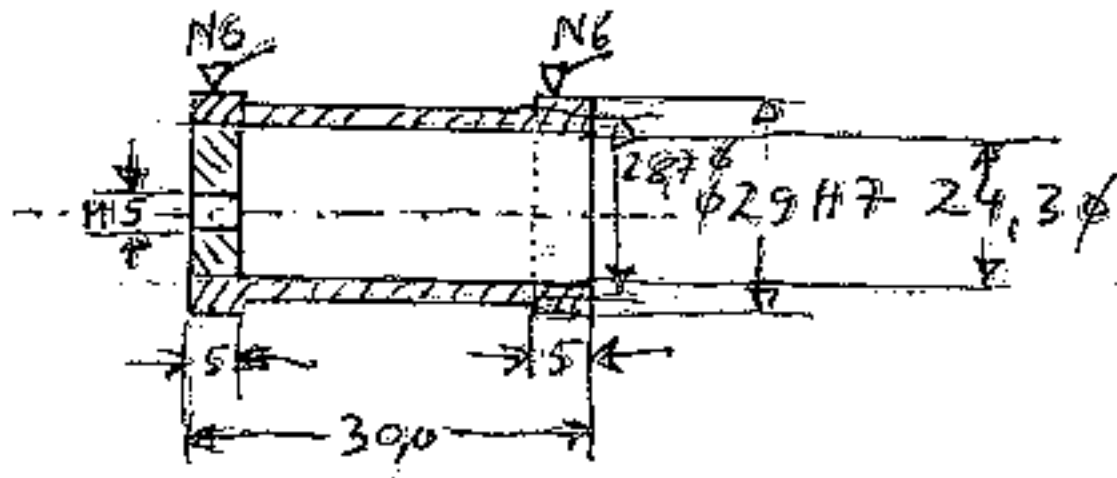
# Zylinder (St 37)

1

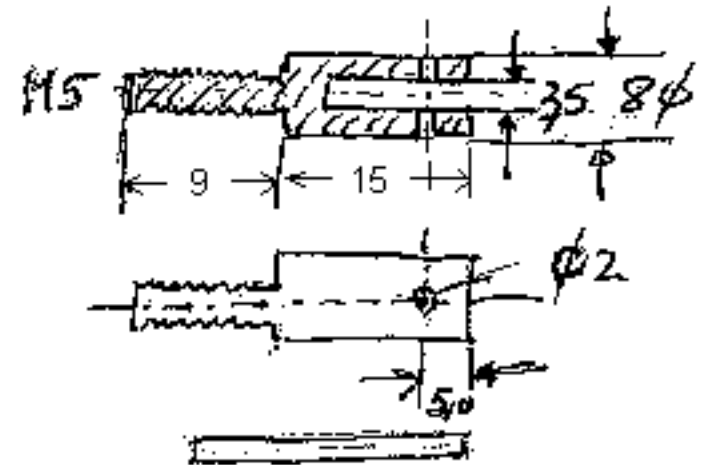


Kolben spielfrei einpassen

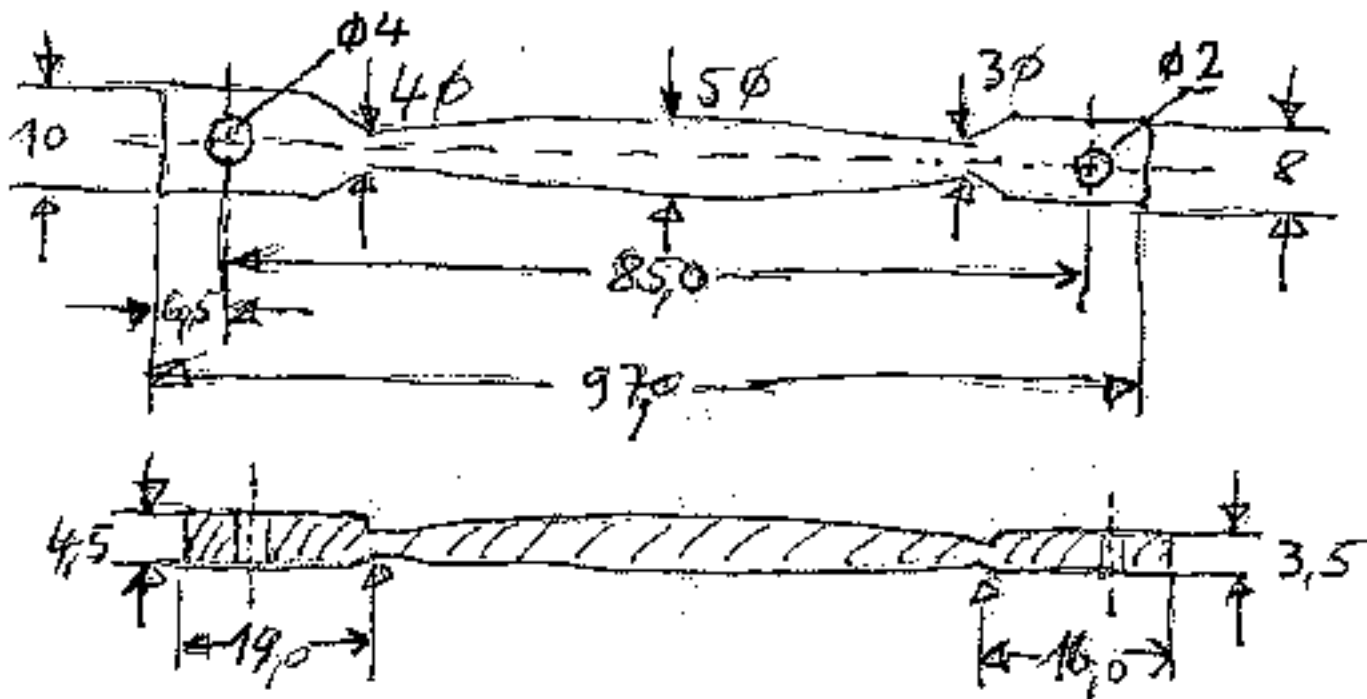
Kolben (Grauguß)



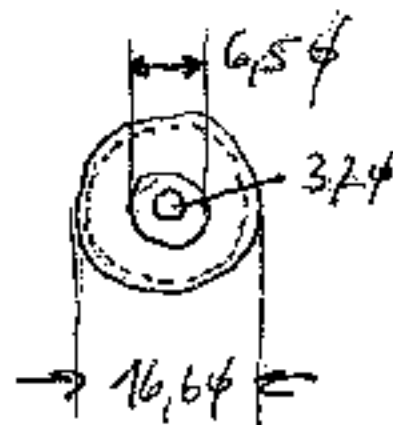
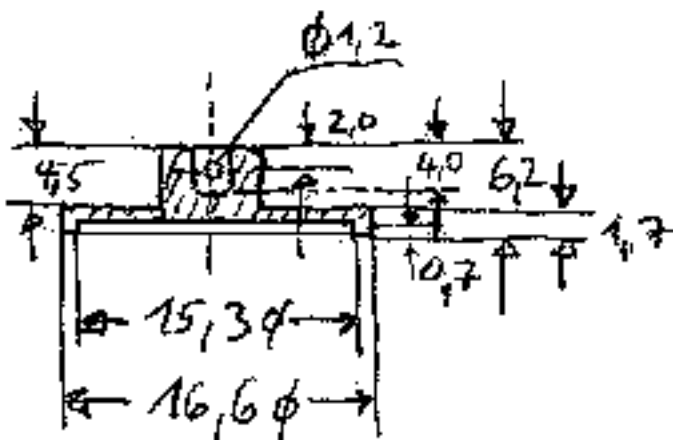
Pleuelbefestigung Kolben (Alu)



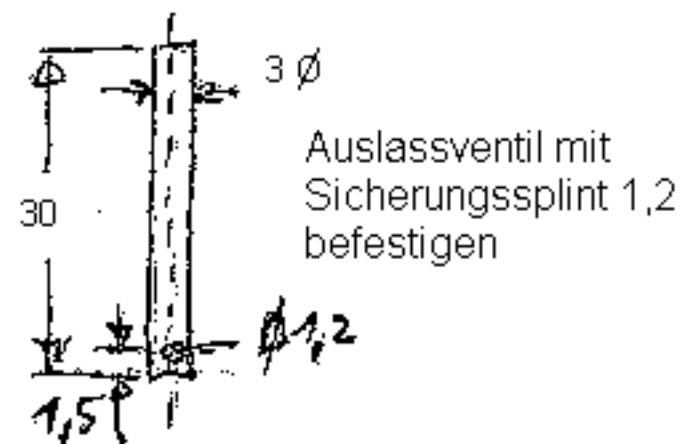
Pleuel (10er Rundalu)



Auslassventil (St37)

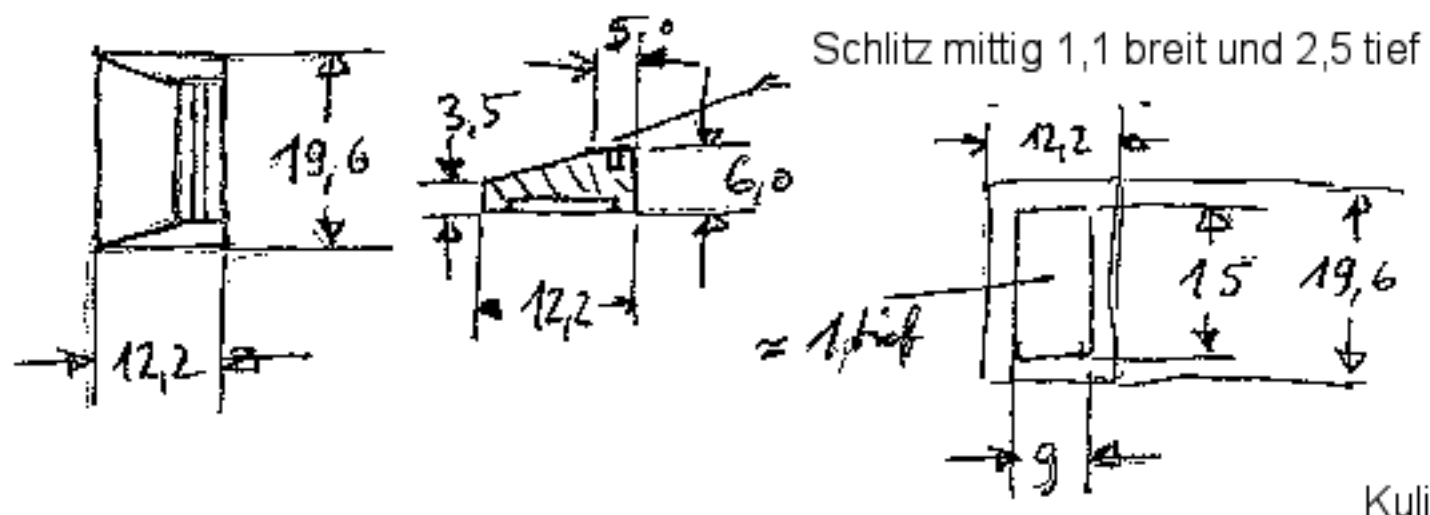


Auslassventilstange (St37)

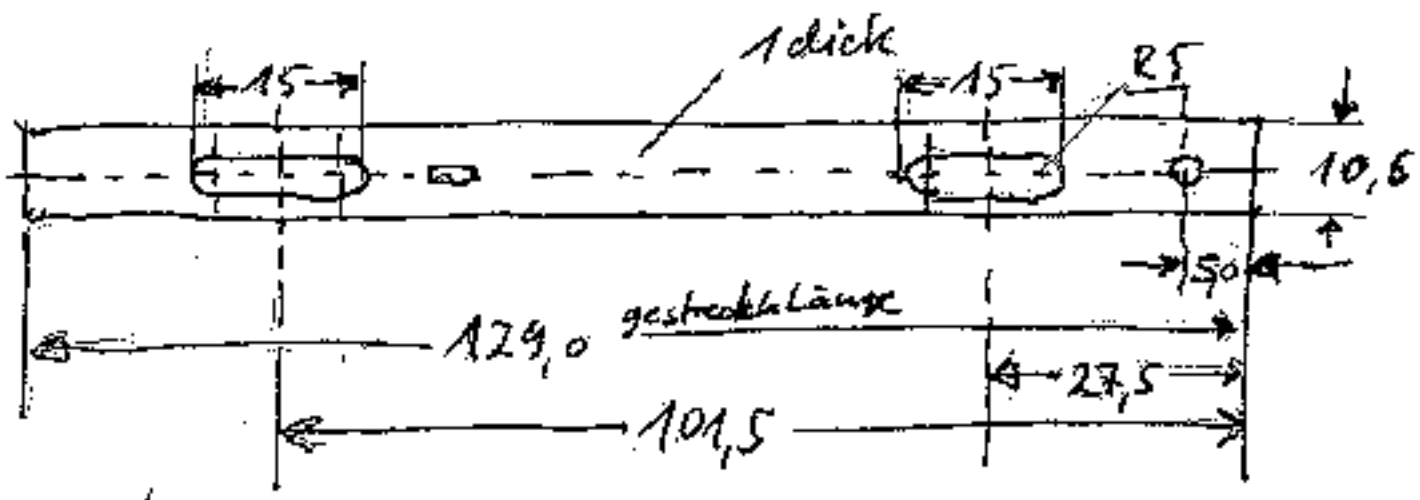


Auslassventil mit Sicherungssplint 1,2 befestigen

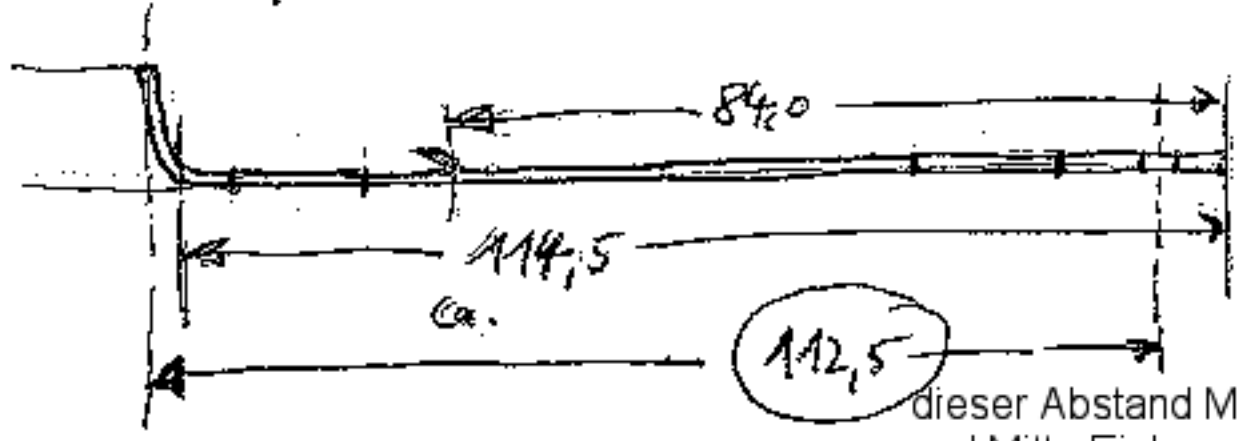
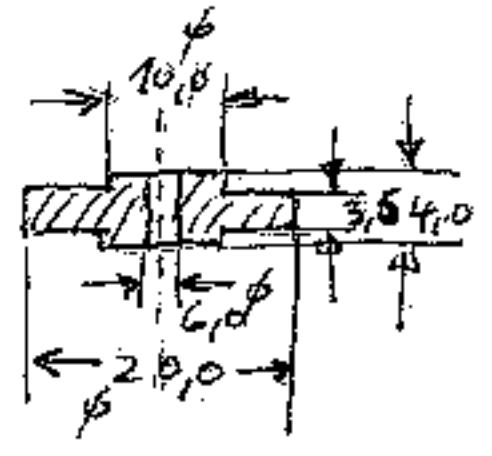
Einlassventil (Ms58)



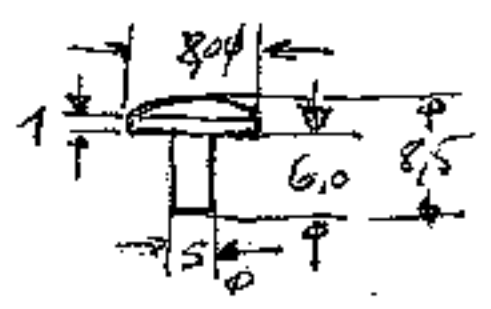
Einlassventilschieber (St37)



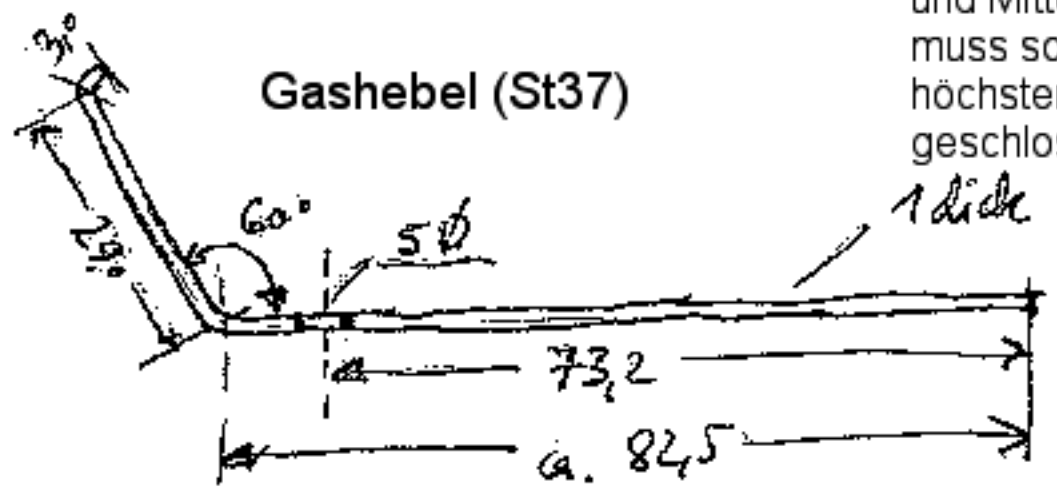
Kulissenrad (St37)



Splint Kulissenrad



Gashebel (St37)

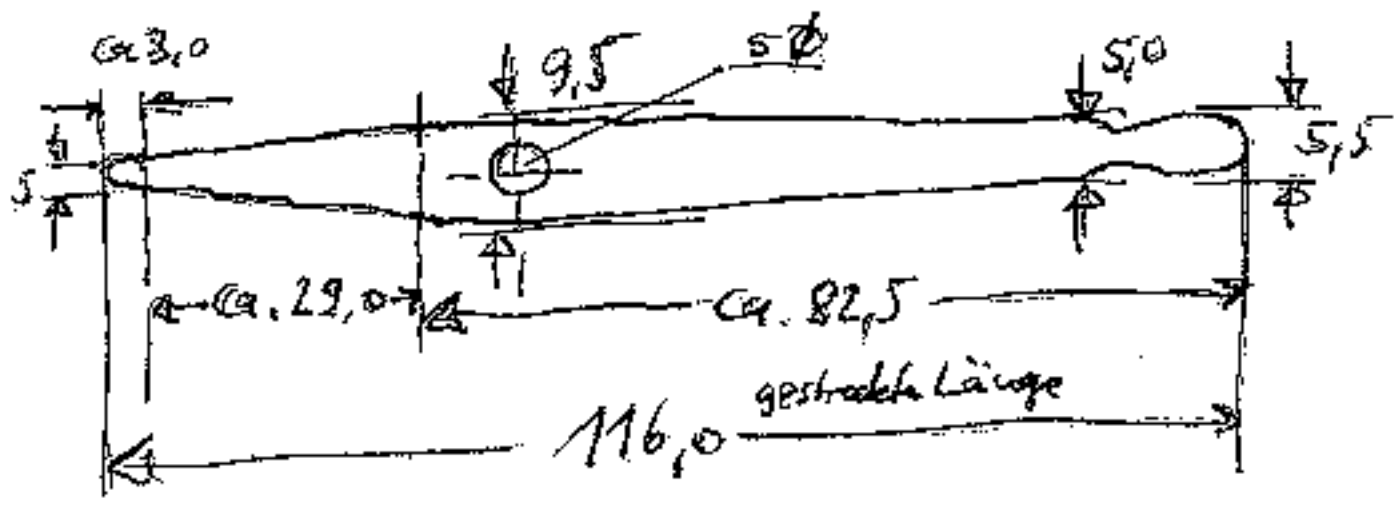
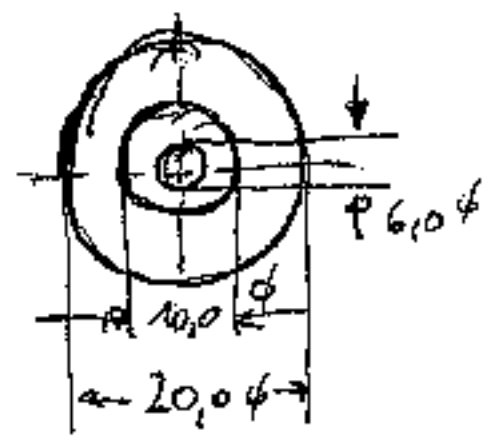


dieser Abstand Mitte Kulissenrad und Mitte Einlassventilschlitz muss so gewählt werden, dass bei höchstem Hub das Einlassventil satt geschlossen ist!

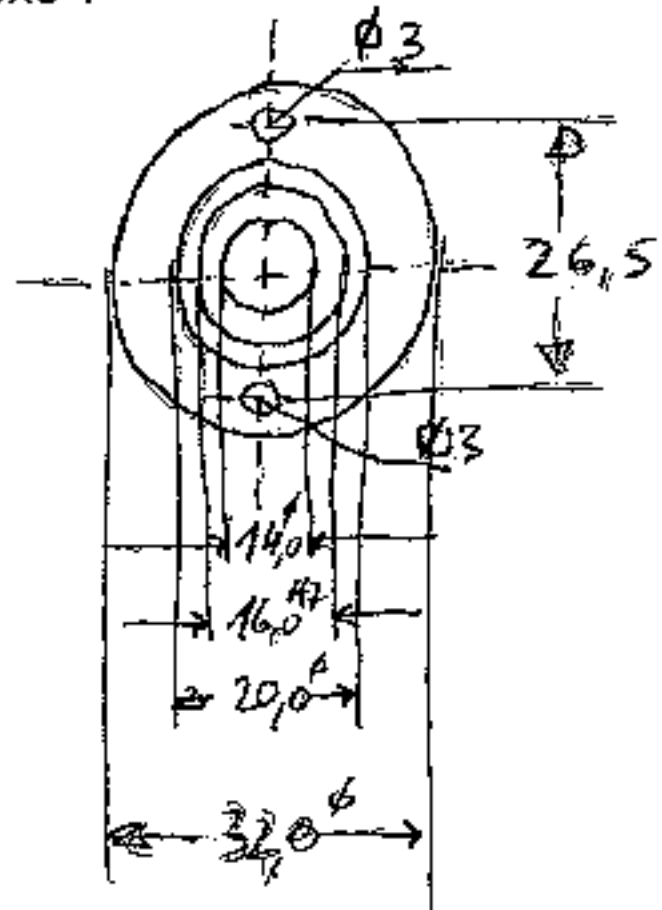
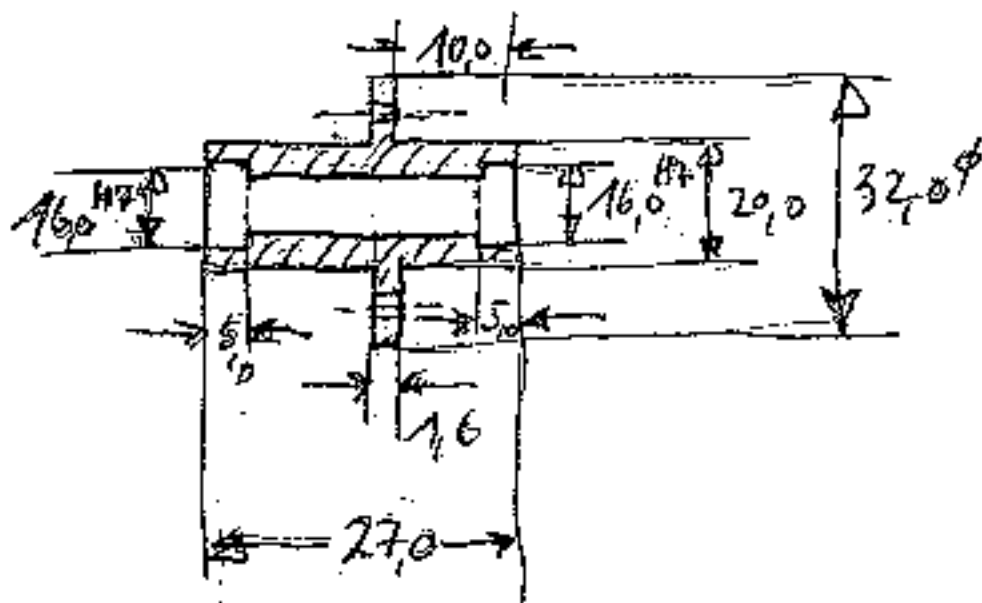
Hülse Kulissenrad



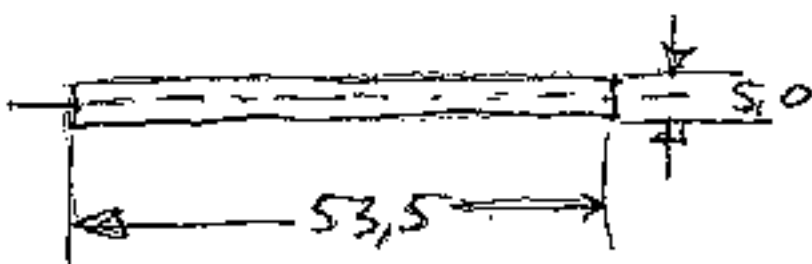
Kulissenrad



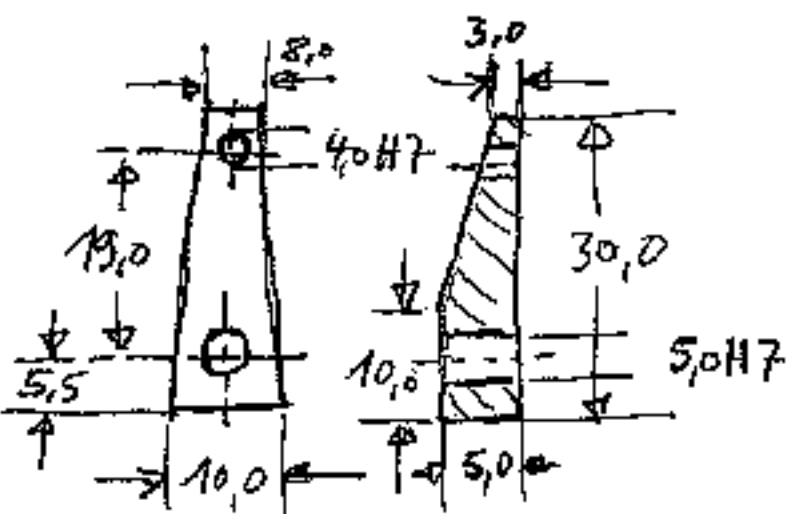
2x Kurbelwellenlager (Alu) mit je 2x Kugellager 16x5 ?



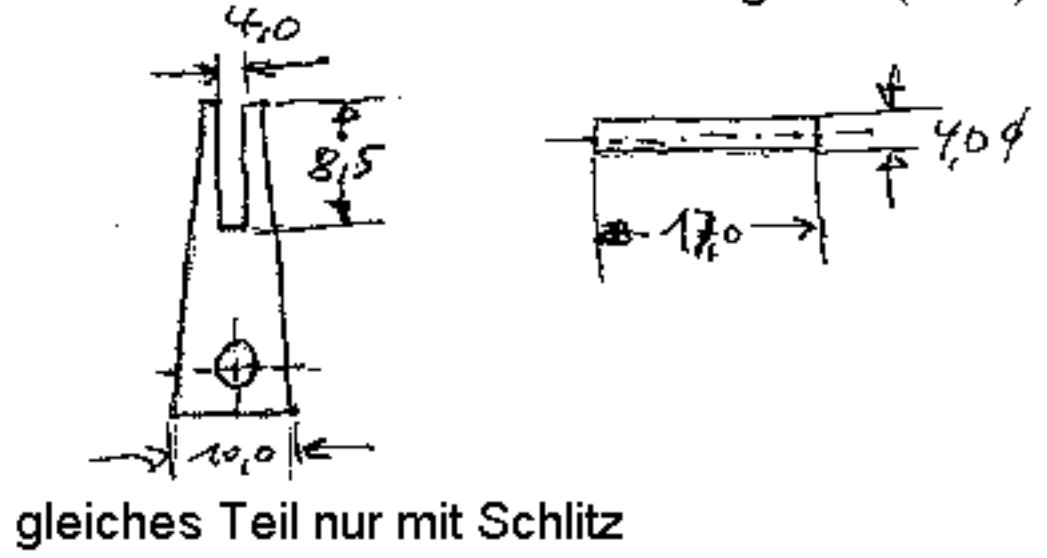
2x Kurbelwellenachse (St37)



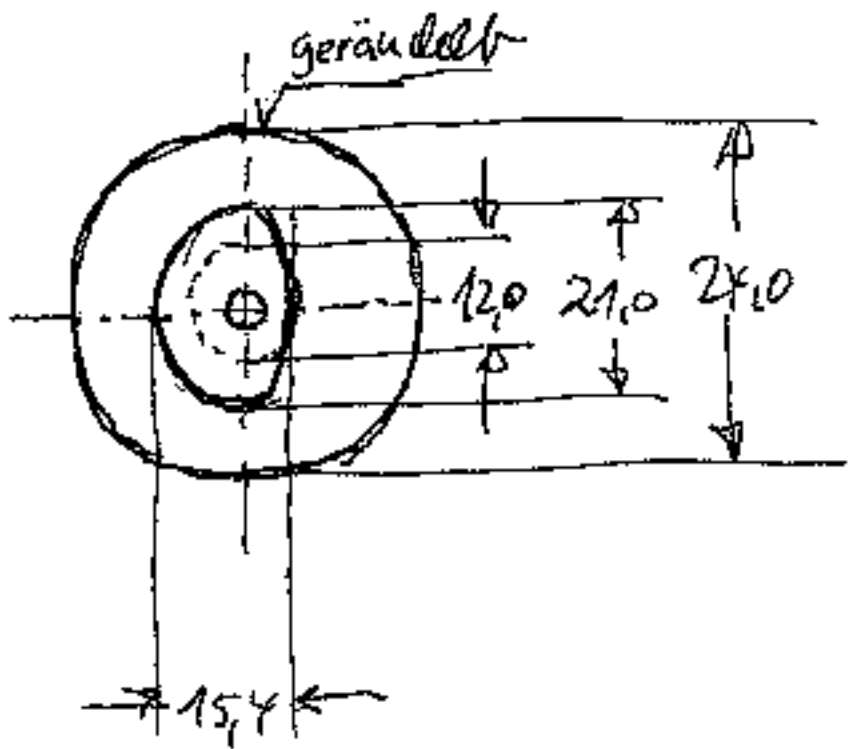
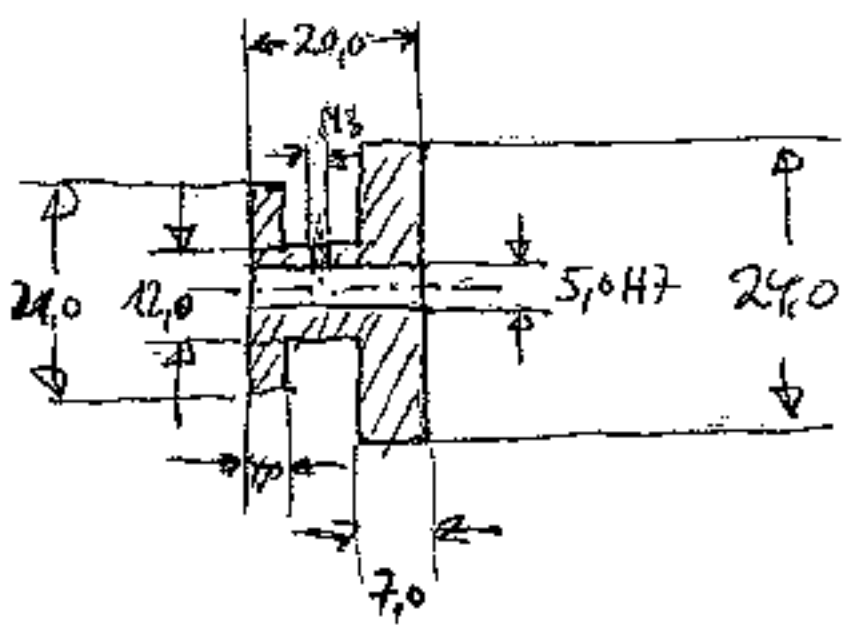
2x Kurbelwange (St37)



Kurbelwangelstift (St37)

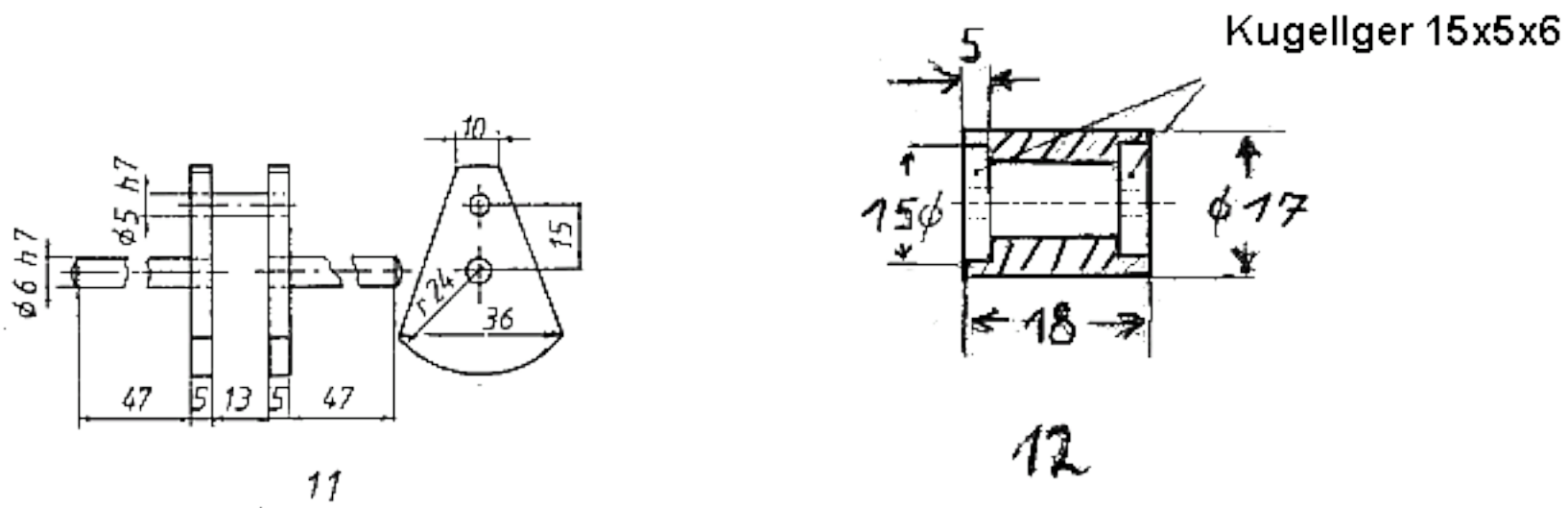
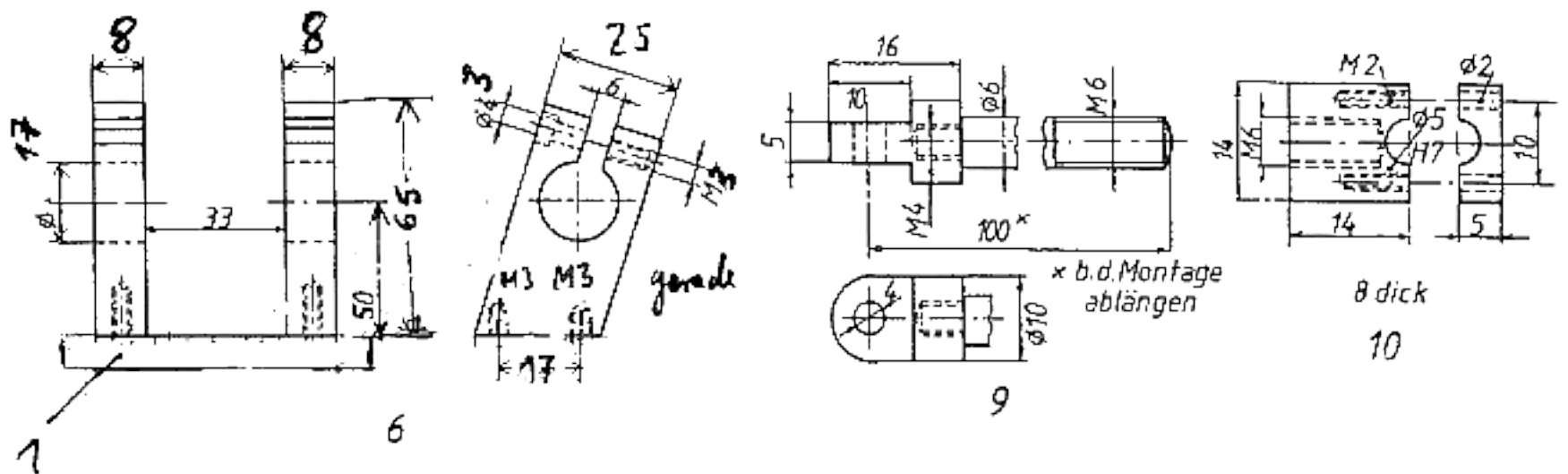
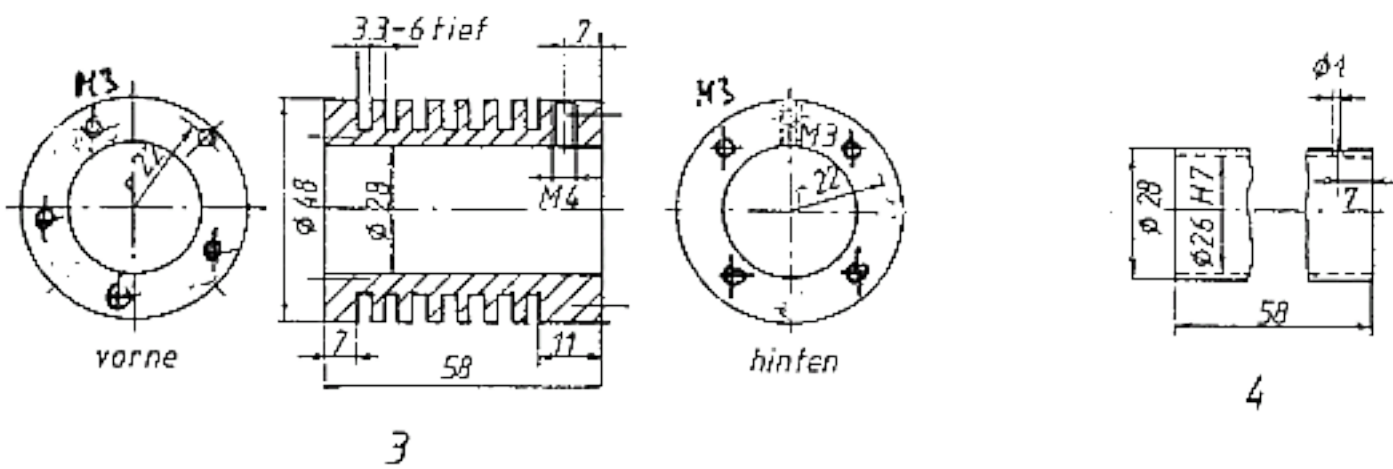
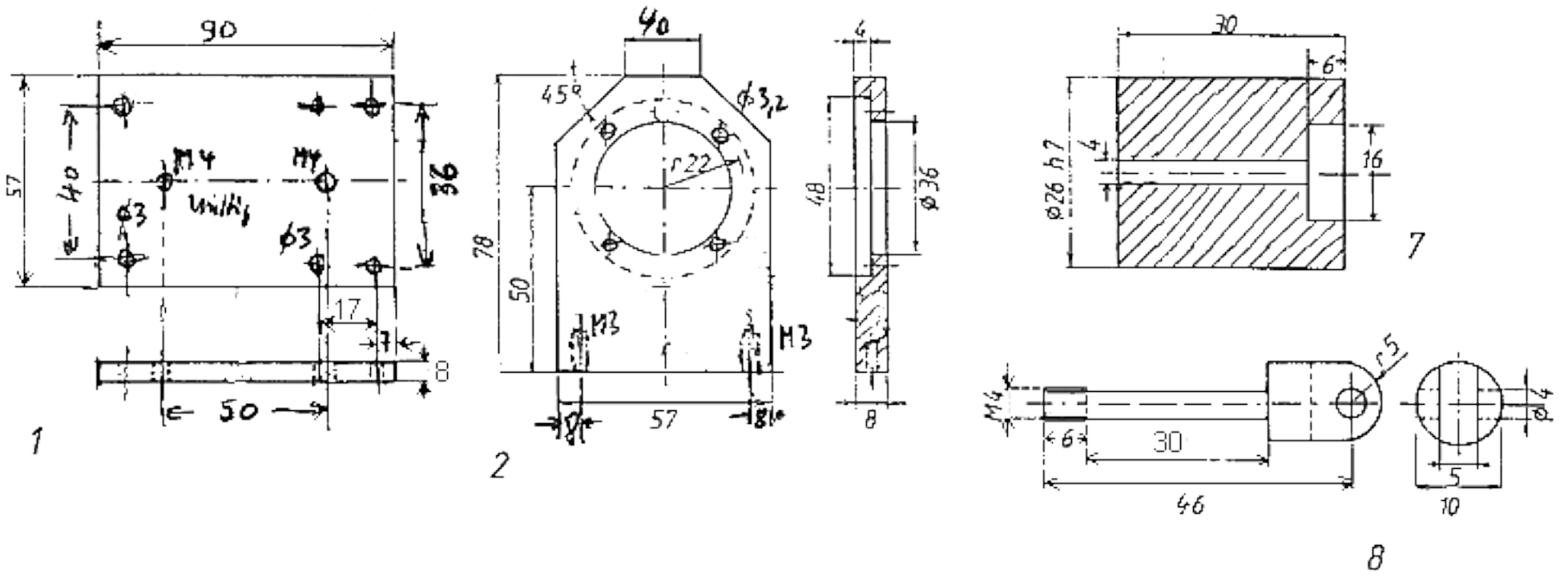


Steuernocke Einlassventil (Alu)



# Teile des Rebi Nachbaues

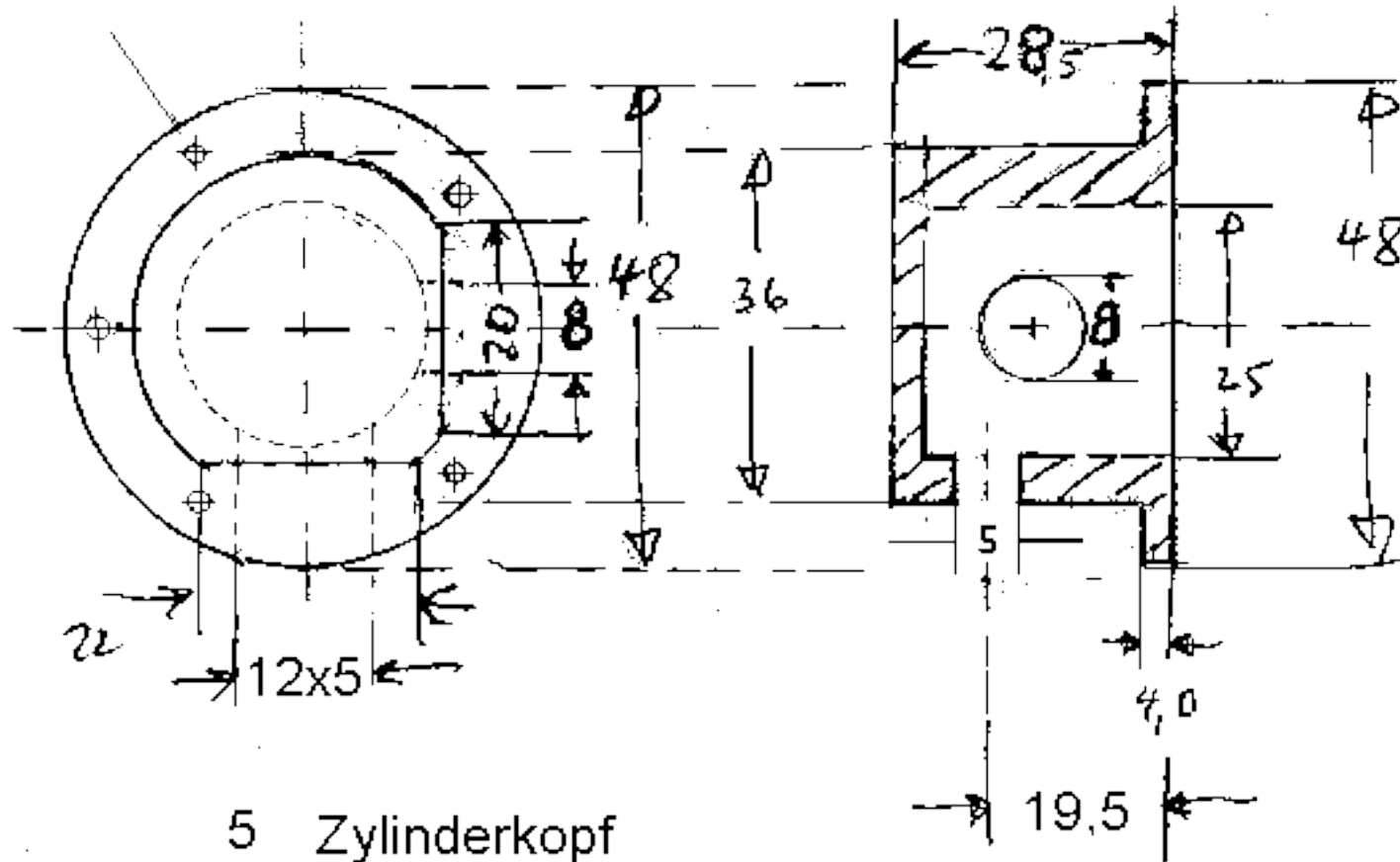
4



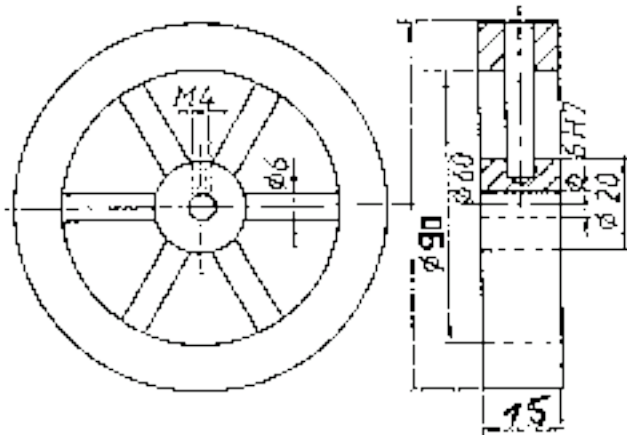
# Teile des Rebi Nachbaues

5

Schrauben versenken



5 Zylinderkopf



Teil Nr.	Bezeichnung	Material
1	Maschinenbasis	Aluminium, Messing
2	Zylinderträger	Aluminium, Messing
3	Zylinder	Aluminium, Gußeisen, Messing
4	Zylinderrohr	Messing, Gußeisen
5	Zylinderkopf	Messing
6	Lagerböcke mit Sockel	Aluminium, Messing
7	Kolben	Graphit
8	Kolbenstangengetenk	Aluminium
9	Kolbenstange mit Gelenkkopf	Aluminium
10	Kolbenstangenkopf	Aluminium
11	Kurbelwelle mit Kugellagern 19/6	Stahl
12	Hülse mit Kugellager 15/6	Aluminium
13	Schwungrad	Gußeisen, Messing, Stahl

Kleinteile wie Schrauben, Stifte, Müttern, sind nicht gesondert angeführt.